

# SLA BATTERY

## GT12-125FA 12V125AH



### FA Series

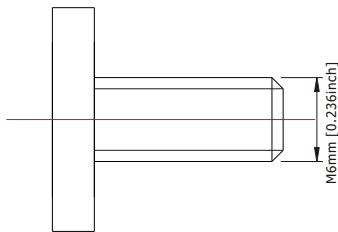
FA (Front Access) Series batteries are designed to be used in the area of communication, which features on new technology in design, reasonable in structure and occupying the leading position in the same industry of the world. The estimated life of FA Series batteries under float service is up to 12 years. It can be employed in numerous application in the fields of telecommunications.

### Application

Telecom	Communication Equipment
Control Equipment	Medical Equipment
UPS	Emergency Power System

### General Features

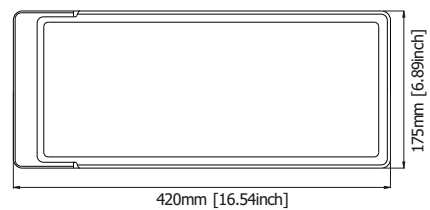
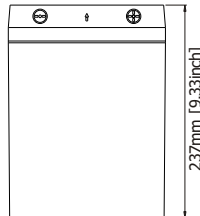
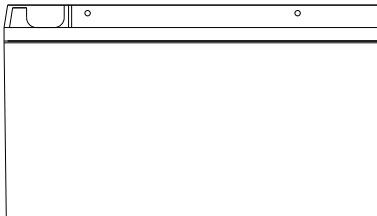
- Easy maintenance and installation
- No need for extra (wrench space) above battery
- Sealed and maintenance free operation
- Non-Spillable construction design
- ABS containers and covers(UL94HB, UL94V-0) optional
- Safety valve installation for explosion proof
- Maximized energy density for installation in relay rack trays
- High quality and high reliability
- Exceptional deep discharge recovery performance
- Flexibility design for multiple install positions



**Terminal Dimensions**

### Construction

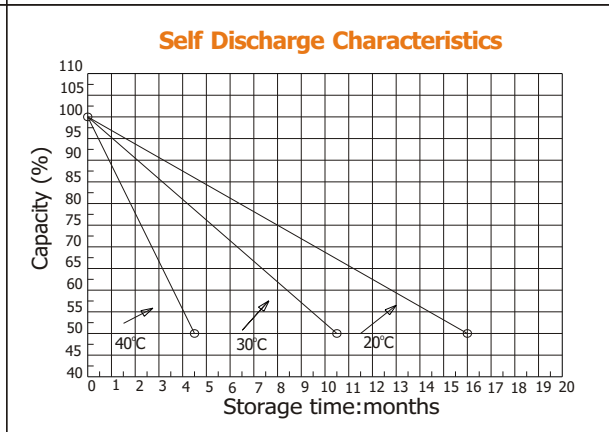
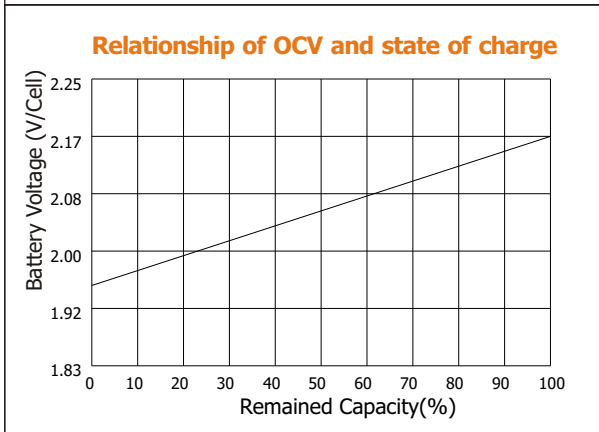
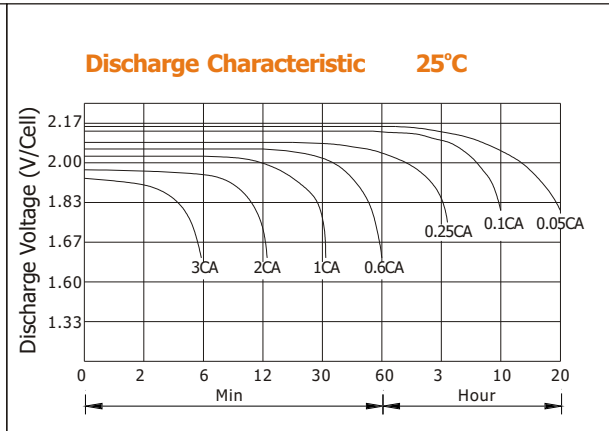
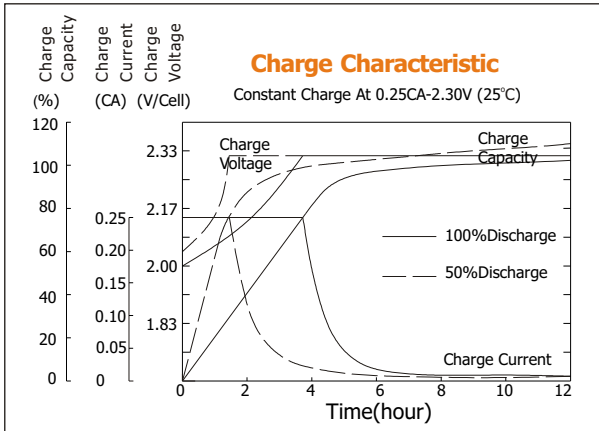
Component	.....Raw material	Sealant	.....Epoxy Resin
Positive	.....Lead dioxide	Safety valve	.....EPDR
Negative	.....Lead	Terminal	.....Copper
Container	.....ABS	Separator	.....Fiber glass
Cover	.....ABS	Electrolyte	.....Sulfuric acid



Battery Model	GT12-125FA			
Designed Floating Life	12 Years			
Capacity(25°C)	20HR(6.05A,1.75V)	10HR(12A,1.75V)	5HR(21.5A,1.75V)	1HR(79A,1.75V)
	127AH	125AH	107.5AH	79AH
Dimensions	Length	Width	Height	Total Height
	420mm(16.54inch)	175mm(6.89inch)	237mm(9.33inch)	237mm(9.33inch)
Approx. Weight	54.5Kg (120 lbs)			
Internal Resistance	Full charged at 25°C: 0.004 Ohm			
Self Discharge	3% of capacity declined per month at (25°C)			
Capacity Affected by Temp.(20HR)	40°C	25°C	0°C	-15°C
	102%	100%	85%	65%
Charge Voltage(25°C)	Cycle use		Float use	
	14.4-15V(-30mV/ °C), max. Current: 31.5A		13.6-13.8V(-20mV/ °C)	

# SLA BATTERY

## GT12-125FA 12V125AH



### Constant current discharge ratings-amperes at 25°C

F. V/Time	5MIN	10MIN	15MIN	30MIN	1HR	3HR	5HR	10HR	20HR
1.60V	445	305	222	133	83.8	34.7	24.2	13.5	6.96
1.67V	400	278	216	130	83.7	34.5	24.0	13.3	6.93
1.70V	380	268	208	127	83.4	34.5	24.0	13.2	6.93
1.75V	338	248	197	124	82.6	34.3	23.8	12.9	6.90
1.80V	305	230	188	121	81.5	34.2	23.6	12.7	6.66
1.85V	231	189	163	111	80.6	34.0	23.4	12.5	6.26

### Constant power discharge ratings-watts at 25°C

F. V/Time	5MIN	10MIN	15MIN	30MIN	1HR	3HR	5HR	10HR	20HR
1.60V	733	505	394	251	165	66.5	46.4	26.9	13.9
1.67V	695	499	390	246	160	66.5	46.4	26.5	13.9
1.70V	649	486	384	240	155	66.5	46.4	26.3	13.9
1.75V	605	455	361	234	154	65.5	45.8	25.9	13.8
1.80V	542	423	339	227	151	64.6	45.1	25.4	13.3
1.85V	434	351	296	208	150	64.4	44.5	25.0	12.5

