

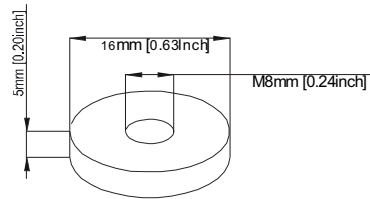
Specification

Nominal Voltage		12V
Rated Capacity (20 hour rate)		120Ah
Dimensions	Length	550mm(21.65inches)
	Width	110mm(4.33inches)
	Height	235mm(9.25inches)
	Total Height	235mm(9.25inches)
Weight		Approx. 40.00Kg(88lbs)

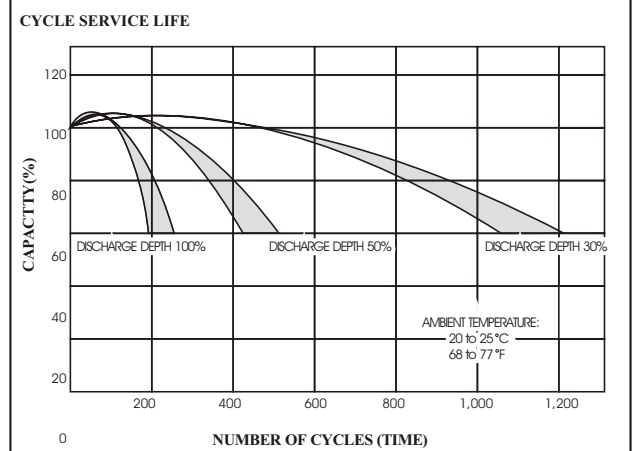
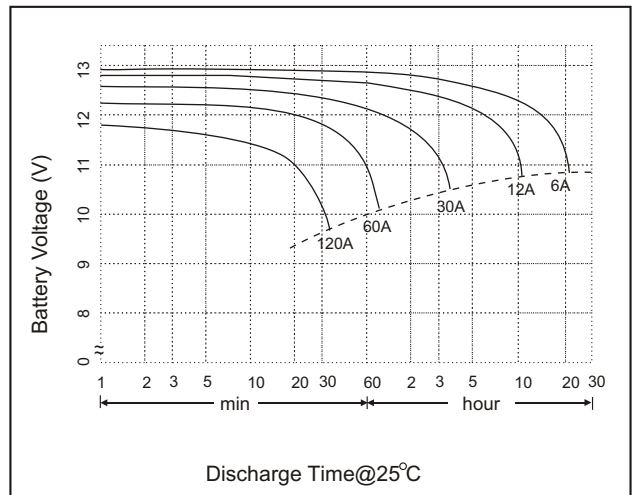
Characteristics

Capacity* 77°F(25°C)	24 hour rate (5.25A)	126Ah
	10 hour rate (11.4A)	114Ah
Internal Resistance(full charged battery 77°F(25°C))		3.95mOhm
Capacity affected by Temperature (20 hour rate)	104°F(40°C)	102%
	77°F(25°C)	100%
	32°F(0°C)	85%
	5°F(-15°C)	65%
Self-Discharge 77°F(25°C)	Capacity after 3 month storage	90%
	Capacity after 6 month storage	80%

Charging (Constant Voltage)	Cycle use	Initial Current 24A (Recommended) Voltage 14.5~14.9V/ 77°F(25°C)
	Float use	Voltage 13.6~13.8V/ 77°F(25°C)
Terminal		T8



Discharge Characteristics



Amperes per cell @ 25°C

End V Per Cell	5M	10M	15M	30M	1h	3h	5h	10h	24h
1.75V	320 A	235 A	187 A	117 A	71.2 A	30.3 A	18.8 A	11.4A	5.25 A
1.80V	289 A	218 A	178 A	114 A	70.3 A	29.4 A	18.2 A	10.9 A	5.00 A
1.85V	207 A	168 A	142 A	105 A	66.0 A	28.3 A	17.4 A	10.3 A	4.85 A

Watt per cell @ 25°C

End V Per Cell	5M	10M	15M	30M	1h	3h	5h	10h	24h
1.75V	572 W	431 W	342 W	191 W	139 W	58.6 W	38.2 W	21.8 W	9.9 W
1.80V	513 W	401 W	321 W	179 W	137 W	57.7 W	38.1 W	21.4 W	9.9 W
1.85V	412 W	332 W	280 W	158 W	129 W	55.8 W	35.7 W	20.5 W	9.2 W